

This manual is for reference and historical purposes, all rights reserved.

**This page is copyright© by M. Butkus, NJ.**

This page may not be sold or distributed without the expressed permission of the producer

I have no connection with any camera company

On-line camera manual library

This is the full text and images from the manual. This may take 3 full minutes for the PDF file to download.

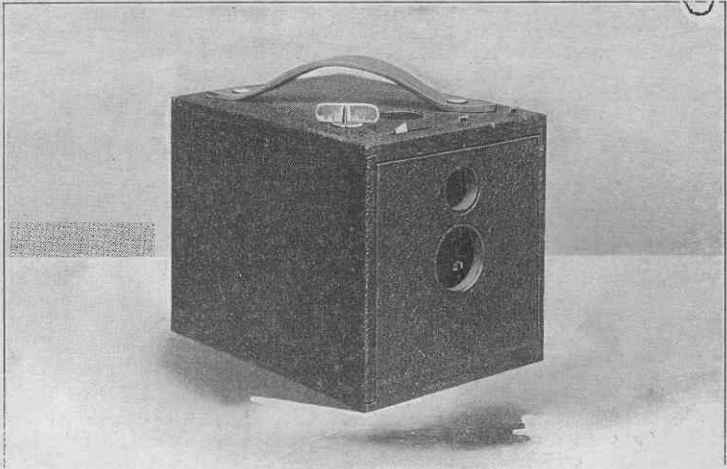
**If you find this manual useful, how about a donation of \$3 to: M. Butkus, 29 Lake Ave., High Bridge, NJ 08829-1701 and send your e-mail address so I can thank you. Most other places would charge you \$7.50 for a electronic copy or \$18.00 for a hard to read Xerox copy.**

**This will allow me to continue to buy new manuals and pay their shipping costs.**

**It'll make you feel better, won't it?**

**If you use Pay Pal or wish to use your credit card,  
click on the secure site on my main page.**

## No. 2 FLEXP KODAK



**T**HE simplicity of this instrument commends it to beginners in photography. Its capabilities place it high in favor with those who are experienced. It is an efficient and reliable camera.

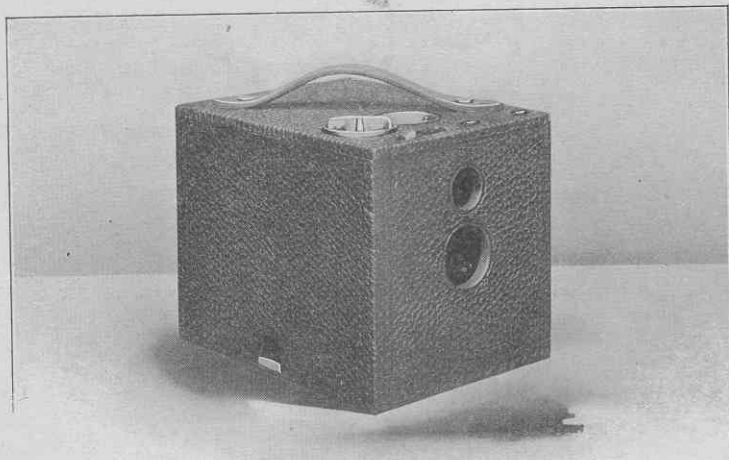
Like the other Kodaks, it is ready for use, the price including every requisite for taking pictures except the film. Every detail of construction in this camera is as carefully guarded as with our higher-priced instruments. It is covered with fine black grain leather and handsomely finished.

For square pictures,  $3\frac{1}{2} \times 3\frac{1}{2}$  inches. Capacity, 12 exposures without reloading. Size of Kodak,  $5\frac{1}{8} \times 4\frac{5}{8} \times 4\frac{3}{8}$ . Weight, 19 ounces. Lens, single achromatic, fixed  $4\frac{1}{2}$ -inch focus. Shutter, Eastman Rotary. (See page 12.)

## THE PRICE

|  |        |
|--|--------|
| No. 2 Flexo Kodak, with Achromatic Lens, . . . . .                                 | \$5.00 |
| N. C. Film Cartridge, 12 exposures, $3\frac{1}{2} \times 3\frac{1}{2}$ , . . . . . | .60    |
| Ditto, 6 exposures, . . . . .  | .30    |
| Ditto, "Double-Two" Cartridge, 4 exposures, . . . . .                              | .20    |
| Kodak Portrait Attachment, . . . . .   | .50    |
| Black Sole Leather Carrying Case, with shoulder strap, . . . . .                   | 1.25   |

## No. 2 BULL'S-EYE KODAK



**T**HIS instrument continues to be the leader among box-form cameras. It is to the last degree simple in operation, yet lacks none of the features necessary to securing the best pictures. It can be easily and quickly opened for loading and removing the film after exposures have been made.

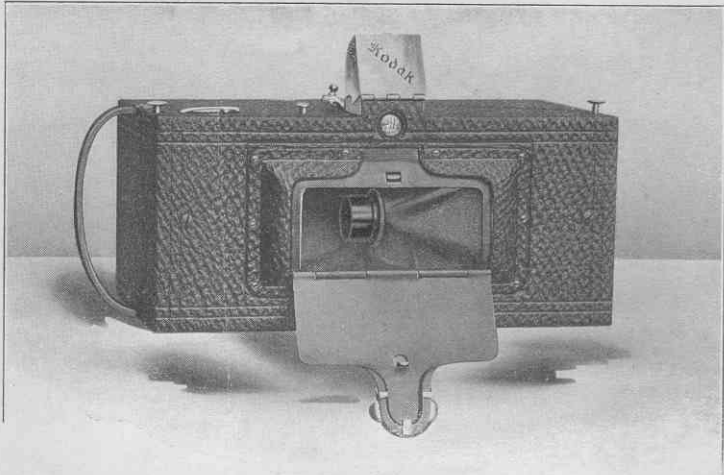
The lenses are carefully selected and tested and universally give good results. The covering is seal grain leather of the finest quality, and the fittings are nickeled.

For square pictures,  $3\frac{1}{2} \times 3\frac{1}{2}$  inches. Capacity, 12 exposures without reloading. Size of Kodak,  $5\frac{3}{4} \times 4\frac{5}{8} \times 4\frac{1}{2}$  inches. Weight, 22 ounces. Lens, meniscus achromatic, fixed focus,  $4\frac{1}{2}$  inches. Shutter, Eastman Rotary. (See page 12.) Brilliant finder and socket for tripod screw.

### THE PRICE

|  |        |
|--|--------|
| No. 2 Bull's-Eye Kodak fitted with meniscus achromatic lens, . . . . .             | \$8.00 |
| N. C. Film Cartridge, 12 exposures, $3\frac{1}{2} \times 3\frac{1}{2}$ , . . . . . | .60    |
| Ditto, 6 exposures, . . . . .  | .30    |
| Ditto, "Double-Two" Cartridge, 4 exposures, . . . . .                              | .20    |
| Kodak Portrait Attachment, . . . . .   | .50    |
| Black Sole Leather Carrying Case, with shoulder strap, . . . . .                   | 1.25   |

## PANORAM-KODAKS



**C**ERTAIN kinds of photographic work can only be done with the Panoram-Kodaks. The pictures they take have a breadth and beauty not attainable with the ordinary camera. Vertical pictures of high waterfalls and mountain peaks, as well as horizontal pictures, give most delightful effects, while the wide scope of view makes the Panoram unequaled in the taking of outdoor group pictures.

No. 1 Panoram-Kodak.—For pictures  $2\frac{1}{4} \times 7$  inches; capacity, 6 exposures without reloading; size of camera,  $3\frac{3}{8} \times 4\frac{1}{4} \times 7\frac{3}{8}$  inches; weight, 24 ounces; two spirit levels; brilliant finder; two tripod sockets. Uses No. 1 F. P. Kodak Cartridges.

No. 4 Panoram-Kodak.—For pictures  $3\frac{1}{2} \times 12$  inches; capacity, 5 exposures without reloading; size of camera,  $4\frac{3}{4} \times 5\frac{1}{2} \times 10\frac{1}{8}$  inches; weight, 2 pounds, 14 ounces; two spirit levels; brilliant finder; two tripod sockets. Uses No. 4 B. E. Cartridges.

### THE PRICE

|  |         |   |         |
|--|---------|---|---------|
| No. 1 Panoram-Kodak, . . . . .                               | \$10.00 | No. 4 Panoram-Kodak, . . . . .                                | \$20.00 |
| N. C. Film Cart., 6 ex., $2\frac{1}{4} \times 7$ , . . . . . | .40     | N. C. Film Cart., 5 ex., $3\frac{1}{2} \times 12$ , . . . . . | .90     |
| Ditto 3 exposures, . . . . .                                 | .20     | Ditto 2 exposures, . . . . .                                  | .45     |
| Leather Carrying Case, . . . . .                             | 1.75    | Leather Carrying Case, . . . . .                              | 2.00    |

## No. 3B QUICK-FOCUS KODAK



**T**HE rapidity with which this new camera can be placed in focus for any distance will render it of great value in catching street scenes and work of like nature. To focus, a catch in the Focusing Scale is set in the notch corresponding to the distance away of the object to be photographed; pressure on a concealed button then springs out the front and the instrument is in focus. The size and shape of the picture,  $3\frac{1}{4} \times 5\frac{1}{2}$ , is something new in a box-form camera. Just right for post cards, too.

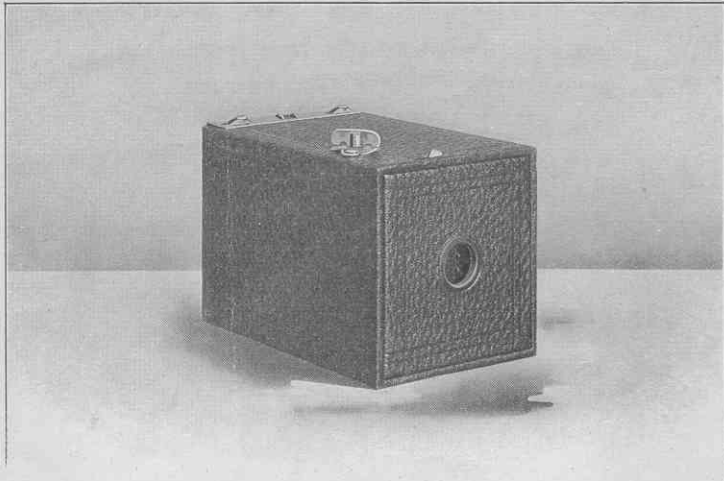
For rectangular pictures,  $3\frac{1}{4} \times 5\frac{1}{2}$  inches. Capacity, 10 exposures. Size of Kodak,  $8\frac{1}{8} \times 6\frac{7}{8} \times 4\frac{5}{8}$  inches. Weight, 2 pounds, 9 ounces. Lens, meniscus achromatic, focal length,  $6\frac{1}{2}$  inches. Shutter, Eastman Rotary. (See page 12.) Two brilliant finders. Two tripod sockets.

### THE PRICE

|  |         |
|--|---------|
| No. 3B Quick Focus Kodak, with Eastman Rotary Shutter, . . . . .                     | \$12.00 |
| * N. C. Film Cartridge, 10 exposures, $3\frac{1}{4} \times 5\frac{1}{2}$ , . . . . . | .70     |
| * Ditto, 6 exposures, . . . . .  | .40     |
| * Ditto, "Double-Two," 4 exposures, . . . . .  | .80     |
| Black Sole Leather Carrying Case, with strap, . . . . .                              | 2.50    |

\* Specify, "For 3B Quick Focus Kodak."

## No. 1 BROWNIE CAMERA



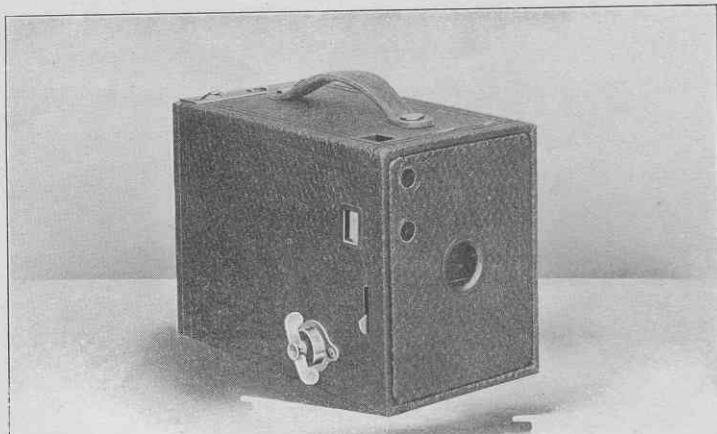
**T**HIS is a wonderfully accurate and reliable little instrument, and the work which has been done with it by school children proves that photography as now simplified is by no means confined to "grown-ups." It is well made, covered with fine quality imitation leather, and has nickeled fittings. V-shaped lines on top give the scope of view, or a Brownie finder (detachable) may be provided for 25c. Only our immense manufacturing facilities and the enormous quantities of No. 1 Brownies sold make their price possible.

For square pictures,  $2\frac{1}{4} \times 2\frac{1}{4}$  inches. Capacity, 6 exposures. Size of camera,  $4\frac{7}{8} \times 3\frac{1}{8} \times 3$  inches. Weight, 8 ounces. Lens, meniscus,  $3\frac{3}{4}$ -inch focus. Shutter, Eastman Rotary (see page 12), with but one stop.

### THE PRICE

|  |        |
|--|--------|
| No. 1 Brownie Camera, with Eastman Rotary Shutter, . . . . .                           | \$1.00 |
| N. C. Film Cartridge, 6 exposures, $2\frac{1}{4} \times 2\frac{1}{4}$ , . . . . .      | .15    |
| Brownie Finder, detachable, . . . . .  | .25    |
| No. 1 Brownie Carrying Case, holds camera and finder, . . . . .                        | .50    |
| No. 1 Brownie Developing and Printing Outfit, including paper for 24 prints, . . . . . | .90    |

## No. 2 BROWNIE CAMERA



**T**HIS camera is similar to the No. 1 Brownie, but larger and with greater capability. These instruments, even in the hands of children, have produced remarkable photographs, while work of the highest character has been done with them by experts. They are just as easy to operate as the No. 1 Brownie, and are most serviceable instruments on any vacation trip.

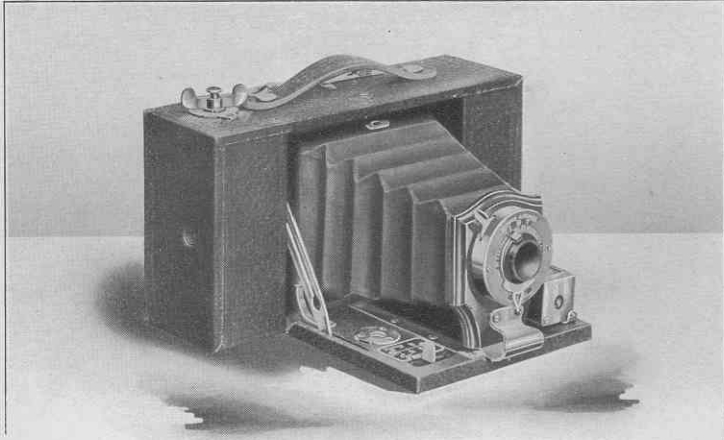
When provided with the Kodak Portrait Attachment, they will take good sized bust photographs of excellent quality.

For rectangular pictures,  $2\frac{1}{4} \times 3\frac{1}{4}$  inches. Capacity, 6 exposures. Size of camera,  $5\frac{5}{8} \times 4 \times 3\frac{1}{4}$  inches. Weight, 13 ounces. Lens, meniscus,  $4\frac{1}{2}$ -inch focus. Shutter, Eastman Rotary. (See page 12.) Two finders.

### THE PRICE

|   |        |
|---|--------|
| No. 2 Brownie Camera, with Rotary Shutter, . . . . .                                  | \$2.00 |
| N. C. Film Cartridge, for 6 exposures, $2\frac{1}{4} \times 3\frac{1}{4}$ , . . . . . | .20    |
| No. 2 Brownie Carrying Case, with shoulder strap, . . . . .                           | .75    |
| Kodak Portrait Attachment, . . . . .  | .50    |
| A B C, Developing and Printing Outfit. (See page 56.) . . . . .                       | 1.50   |

## No. 2 FOLDING BROWNIE



**I**N this camera the Brownie idea is extended to a folding camera with features of equipment usually found on only high-priced cameras. It is, in fact, a very superior little instrument, and with its iris diaphragm shutter and the three-lock focusing device becomes "almost a Kodak." Always ready for use as a fixed focus camera, with the additional advantage of special focusing lock for portraiture or landscape.

Well made in every detail, perfect in adjustment, rich in finish.

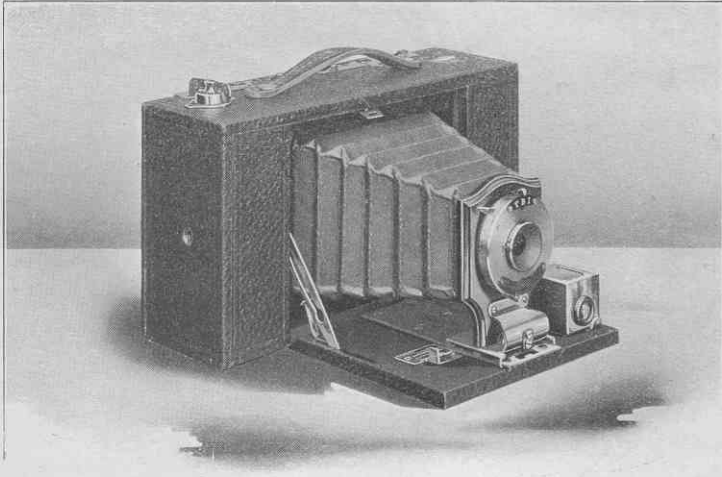
For rectangular pictures,  $2\frac{1}{4} \times 3\frac{1}{4}$  inches. Capacity, 6 exposures. Size of camera,  $6\frac{7}{8} \times 3\frac{3}{8} \times 2\frac{1}{8}$  inches. Weight, 16 ounces. Lens, meniscus,  $4\frac{1}{2}$ -inch focus. Shutter, Pocket Automatic. (See page 12.) Reversible finder. Two tripod sockets. Automatic focusing lock.

### THE PRICE

|   |        |
|---|--------|
| No. 2 Folding Brownie Camera, with Pocket Automatic Shutter, . . . . .            | \$5.00 |
| N. C. Film Cartridge, 6 exposures, $2\frac{1}{4} \times 3\frac{1}{4}$ , . . . . . | .20    |
| No. 2 Folding Brownie Carrying Case, . . . . .                                    | .75    |
| Kodak Portrait Attachment, . . . . .  | .50    |



## No. 3 FOLDING BROWNIE



**T**HIS is the leader of the Brownies. Light, compact, carefully constructed; with the same shutter that we supply on our No. 3 Folding Pocket Kodak, but without pneumatic release, it well deserves the unqualified praise it has received.

The scope of the automatic focusing lock is a noteworthy feature of the camera, the scale being for 6, 8, 10, 15, 25, and 100 feet.

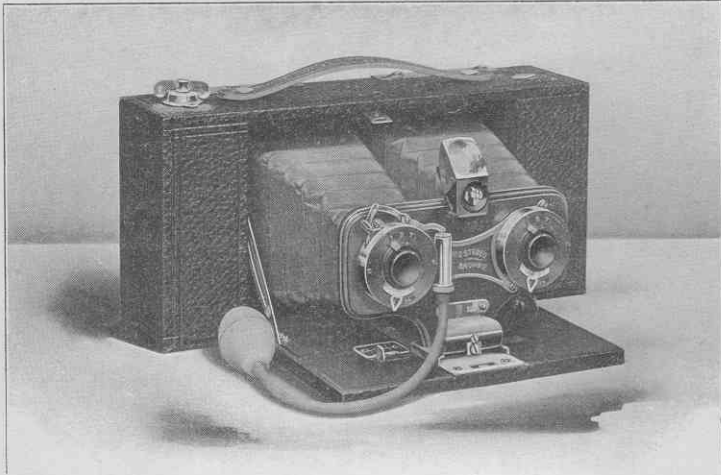
It appeals to all who wish an inexpensive instrument taking a picture  $3\frac{1}{4} \times 4\frac{1}{4}$  inches. Unlike the other Brownies, it takes *12 exposure cartridges*.

For rectangular pictures,  $3\frac{1}{4} \times 4\frac{1}{4}$  inches. Capacity, 12 exposures. Size of camera,  $8\frac{3}{8} \times 4\frac{5}{8} \times 2\frac{5}{8}$  inches. Weight, 25 ounces. Lens, meniscus, 5-inch focus. Shutter, F. P. K. Automatic (see page 13), without bulb. Automatic focusing lock. (See page 15.) Reversible finder. Two tripod sockets.

### THE PRICE

|  |        |
|--|--------|
| No. 3 Folding Brownie Camera, with F. P. K. Automatic Shutter, . . . . .           | \$9.00 |
| N. C. Film Cartridge, 12 exposures, $3\frac{1}{4} \times 4\frac{1}{4}$ , . . . . . | .70    |
| Ditto, 6 exposures, . . . . .  | .35    |
| Ditto, "Double-Two" Cartridge, 4 exposures, . . . . .                              | .25    |
| No. 3 Folding Brownie Carrying Case, . . . . .                                     | 1.00   |
| Kodak Portrait Attachment, . . . . .   | .50    |

## No. 2 STEREO BROWNIE



**T**HERE is a rapidly growing interest in Stereoscopic photography—a field of fascinating work for any amateur. And it's not at all complicated now; the cutting apart and transposing of the negatives, the only difficult feature of stereoscopic work, being entirely done away with by the Self-Transposing Printing Frame.

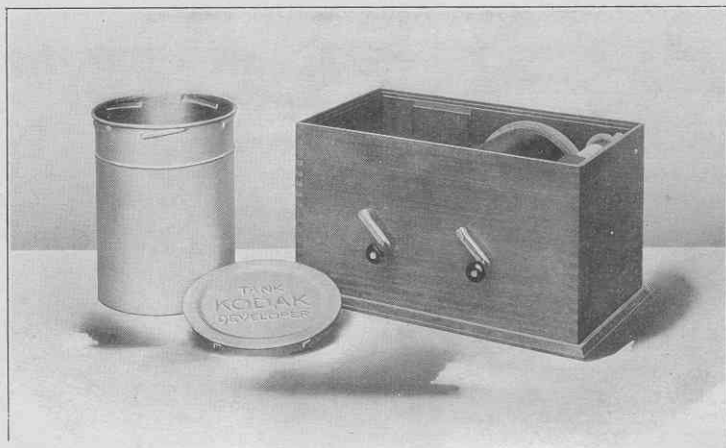
The No. 2 Stereo Brownie is an accurate Stereoscopic camera, simple in every detail. The lenses and twin shutters are effective and optically correct.

For Stereo pictures, each  $3\frac{1}{4} \times 2\frac{1}{2}$  inches. Capacity, 10 Stereo exposures. Size of camera,  $9\frac{3}{4} \times 4\frac{1}{2} \times 2\frac{1}{2}$  inches. Weight, 29 ounces. Lenses, meniscus achromatic,  $4\frac{1}{2}$ -inch focus. Shutters, Pocket Automatic (see page 12), with 4 stop openings. Automatic Focusing lock. (See page 15.) Brilliant finder with hood. Tripod socket.

### THE PRICE

|  |         |
|--|---------|
| No. 2 Stereo Brownie, fitted with pair of Pocket Automatic Shutters, . . . . .                   | \$12.00 |
| N. C. Film Cartridge, 10 Stereo exposures, . . . . .   | .70     |
| Ditto, 6 exposures, . . . . .  | .40     |
| Ditto, "Double-Two," 4 exposures, . . . . .  | .80     |
| Carrying Case, . . . . .   | 1.00    |
| Self-Transposing Printing Frame, for $3\frac{1}{4} \times 2\frac{1}{2}$ Stereo prints, . . . . . | 1.50    |
| Brownie Stereoscope, . . . . .   | .75     |

## KODAK TANK DEVELOPER



**T**HE Kodak Tank Developer makes the daylight development of film a very simple process and the resulting negatives are of a higher average than those obtained in the old darkroom way.

In general principle, the Kodak Tank Developer is the same as the Kodak Developing Machine, but is an improvement upon that process in convenience and results.

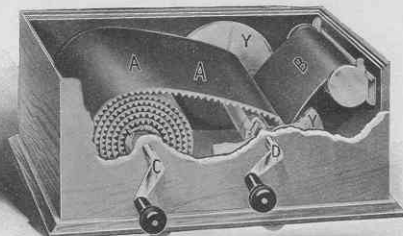
As with the Developing Machine, the film after exposure is protected from light by being first wound up with a light-proof apron. But with the Developing Machine the operator has to continue turning a crank, thus revolving the film through the developer; while with the Kodak Tank Developer the film is removed from the winding box and, being placed in a cup of developer, requires no turning or motion at all during development, beyond tipping the cup end for end two or three times to insure the developer acting

# KODAK TANK DEVELOPER

CONTINUED

evenly. (In case of the Brownie Tank Developer the film roll itself is turned.)

A glance at the cut on this page will show the method of winding film and protecting apron together. B is the black paper of the Kodak Cartridge; AA is the protecting apron. Apron, black paper, and film are wound on to axle D, and when so wound are removed from the box and placed in the Developing Tank in the light of an ordinary room.



BOX FOR WINDING PROTECTING APRON AND FILM TOGETHER

Development is allowed to go on for twenty minutes and the film requires no attention during that time beyond turning the cup containing film end for end two or three times during development, a tightly-fitting cover being provided for the cup for this purpose. When development is completed the film is removed for fixing.

That development by timing—the Kodak Tank Developer and Developing Machine—is correct from a scientific standpoint, and in practice better than trying to determine the proper length to which development should be carried by inspecting the negative before the darkroom lamp, is now generally conceded. The Kodak Tank Developer to-day is being used by many of the leading pictorialists, who are obtaining with it their best negatives. Compared with darkroom development, it is not only convenience against inconvenience, but it is science against guess work.

# KODAK TANK DEVELOPER

CONTINUED

Kodak Tank Developers are made in four sizes, the "7-inch," the "5-inch," the "3½-inch," and "Brownie," the latter taking only 2¼-inch Brownie film and having no cover for Solution Cup.

With the Kodak Tank Developer the amateur can develop a number of rolls of film at once; merely providing himself with extra tanks, aprons, and reels, which will be found listed (Duplicating Outfits) in the price list below. The winding boxes themselves are strongly made, with metal parts nicked. The Tank is of brass, heavily nicked.

Both handles of the box are removable, and together with the Tank and apron can be packed inside the box, thus making the entire outfit self-contained.

## THE PRICE

|  |        |
|--|--------|
| Brownie Kodak Tank Developer. For use with No. 1, No. 2, and No. 2 Folding Brownie Cartridges, complete.                       | \$2.50 |
| Duplicating Outfit for same, consisting of 1 Solution Cup, 1 Transferring Reel, and 1 Apron.                                   | 1.25   |
| 3½-inch Kodak Tank Developer. For use with all Kodak or Brownie Cartridges having a film width of 3½ inches or less, complete. | 5.00   |
| Duplicating Outfit for same, consisting of 1 Solution Cup, 1 Transferring Reel, and 1 Apron.                                   | 2.50   |
| 5-inch Kodak Tank Developer. For use with all Kodak and Brownie Cartridges having a film width of 5 inches or less, complete.  | 6.00   |
| Duplicating Outfit for same, consisting of 1 Solution Cup, 1 Transferring Reel, and 1 Apron.                                   | 3.00   |
| 7-inch Kodak Tank Developer. For use with No. 5 Cartridge Kodak or shorter film cartridges, complete.                          | 7.50   |
| Duplicating Outfit for same, consisting of 1 Solution Cup, 1 Transferring Reel, and 1 Apron.                                   | 3.75   |

## KODAK TANK DEVELOPER SUPPLIES

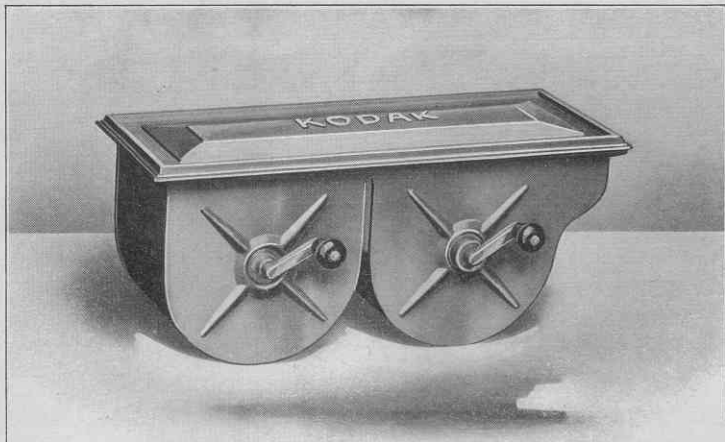
All the amateur needs in the line of supplies for the Kodak Tank Developer are Developing Powders, and Kodak Acid Hypo for fixing. The developer powders listed below are accurately prepared and contain only carefully-tested chemicals of the best quality.

The developing solution is prepared by simply dissolving the powders in water. No graduate is needed, the water being measured in the solution cup.

A wooden stirring rod will be found convenient in preparing the developer, but a spoon or even a stick will do.

|  |       |
|--|-------|
| Kodak Tank Developer Powders, Brownie, per package of ½ dozen, . . . . . | \$ 15 |
| Ditto, for 3½-inch Tank, per package, ½ dozen, . . . . .                 | 20    |
| Ditto, for 5-inch Tank, per package, ½ dozen, . . . . .                  | 25    |
| Ditto, for 7-inch Tank, per package, ½ dozen, . . . . .                  | 25    |
| Kodak Acid Fixing Powder, per ½-pound package, . . . . .                 | 15    |
| Ditto, per 1-pound package, . . . . .                                    | 25    |

## KODAK DEVELOPING MACHINES



**T**HE Kodak Developing Machines are of brass and fully nicked. They may be readily packed in the traveler's trunk or suit case, or may be carried as hand baggage in their neatly-finished wooden cases. All Kodak or Brownie film cartridges may be developed in daylight in these machines. Their operation is similar to the Kodak Tank Developer, but in the machine the film is revolved through the solution during development.

### THE PRICE

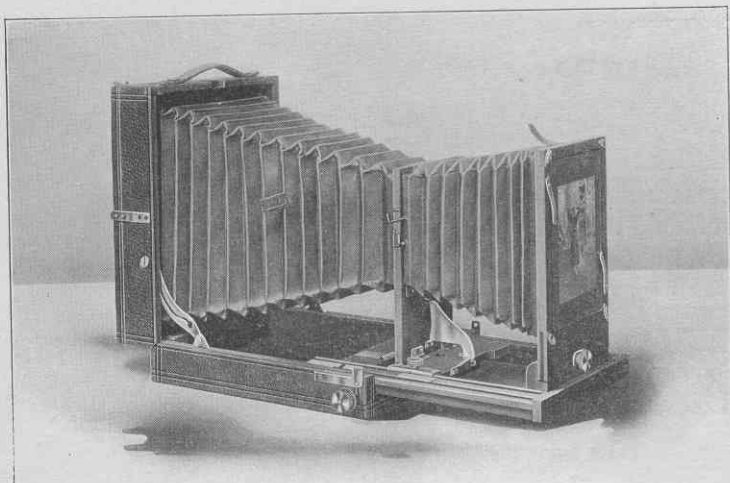
Style E Kodak Developing Machine. For use with Kodak and Brownie Cartridges of all sizes up to and including 4x5 (price includes a handsomely-finished wooden carrying case, with leather handle), . . . . . \$7.50  
Brownie Developing Machine. For No. 1 and No. 2 Brownie Cartridges, . . . . . 2.00

### KODAK DEVELOPING MACHINE SUNDRIES

Kodak Developing Outfits for use with Kodak Developing Machines, include Developer Powders, Kodak Acid Fixing Powder, Graduates, Stirring Rod, and Squeegee.

"E," for use with Style E Machine, . . . . . \$1.60  
"Brownie," for use with Brownie Machine, . . . . . .75  
Kodak Developer Powders for Style E Machine, per package of 1/2 dozen, . . . . . .25  
Ditto, for Brownie Machine, . . . . . .15  
Kodak Acid Fixing Powder, per pound package, . . . . . .25

# KODAK ENLARGING CAMERA



**T**HIS instrument enables the amateur to gratify his ambition for large pictures, without the bother of carrying about a large camera. Simple, convenient, inexpensive.

By its use enlargements up to  $6\frac{1}{2} \times 8\frac{1}{2}$  are made from  $4 \times 5$ , and  $3\frac{1}{4} \times 4\frac{1}{4}$  negatives. Smaller negatives enlarge to approximately  $4 \times 5$  or  $5 \times 7$ . Focusing may be done by the scale or on the ground glass, as desired. No darkroom is necessary, except for loading holder and for development. May be used as a portrait camera by removing negative carrier and lens and substituting a suitable lens, the change being made in a few seconds.

## THE PRICE

|  |         |
|--|---------|
| No. 1 Kodak Enlarging Camera, equipped for making enlargements from $4 \times 5$ glass negatives, or from film negatives up to $4 \times 5\frac{1}{2}$ inches, . . . . . | \$15.00 |
| $6\frac{1}{4} \times 8\frac{1}{2}$ Inside Kits, $5 \times 7$ opening, . . . . .  | .35     |
| Ditto, $4 \times 5$ opening, . . . . .   | .35     |
| Glass Negative Holders, $3\frac{1}{4} \times 4\frac{1}{4}$ , . . . . .   | .50     |
| Ditto $3\frac{1}{2} \times 3\frac{1}{2}$ , . . . . .   | .50     |
| Special Portrait Lens, $8\frac{1}{2}$ -in. focus, speed f. 8, for bust work, . . . . .   | 7.50    |
| Extra Lens Board. No extra charge for fitting to our Special Portrait Lens, . . . . .  | .75     |

## KODAK PORTRAIT ATTACHMENT

**F**OR portrait making one does not need to have elaborate apparatus. A fifty-cent attachment on a small Kodak or Brownie camera will enable one to make good sized head and shoulder pictures — while the attachments which we now furnish for the Cartridge and other Kodaks of larger size, enable one to make bust portraits of any size desired, limited only by the dimensions of the plate.



MADE WITH KODAK PORTRAIT ATTACHMENT

The Kodak Portrait Attachments are simply extra lenses which slip on in front of the regular lenses. They in no way affect the operation of the fixed-focus Kodaks except that they make them cut sharp at a distance of  $3\frac{1}{2}$  feet, and thus throw more distant objects out of focus. They may also be used to good advantage with any of the focusing Kodaks.

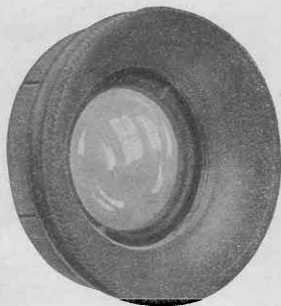
With the attachment in place, the focus of these instruments set at 15 feet, and the subject  $3\frac{1}{2}$  feet



# KODAK PORTRAIT ATTACHMENT

(CONTINUED)

from the camera, admirable bust portraits are obtained, and, by changing the focus, it is practical to work at different distances, thus increasing or diminishing the size of the image.



KODAK PORTRAIT ATTACHMENT

For use with all regularly equipped Kodaks listed in this catalogue except the Panoram-Kodaks. May also be used with the No. 2 Brownie, and No. 2 and No. 3 Folding Brownie Cameras.

Be sure and give exact designation of instrument when ordering, and when to be used with a pneumatic release shutter, also give exact designation of same.

## THE PRICE

Kodak Portrait Attachment, . . . . . \$ .50.

# KODAK WIDE ANGLE LENSES

**T**HESE lenses have a speed of f.16, and are interchangeable with the lenses furnished with the Cartridge Kodak, the No. 4 Screen Focus Kodak, and the No. 4A Folding Kodak.

The Wide Angle Kodak lenses are rectilinear, carefully tested, and are absolutely high grade in every instance. With each one we furnish a leather case and a properly graduated focusing scale for attaching to the camera bed.

In ordering, give size (No.) of Kodak and specify the shutter the lens is to be used with.

## THE PRICE

|  |        |
|--|--------|
| No. 3 (3¼ x 4¼) Wide Angle Kodak Lens, equivalent focus, 3½ inches, speed f. 16, | \$5.00 |
| No. 4 (4 x 5) Wide Angle Kodak Lens, equivalent focus, 4½ inches, speed f. 16,   | 5.00   |
| No. 5 (5 x 7) Wide Angle Kodak Lens, equivalent focus, 5½ inches, speed f. 16,   | 7.50   |
| (also adapted to 4A Kodak), . . . . .  |        |

## THE ANASTIGMAT ADVANTAGE

**A**LMOST any lens will do good work if you do not ask too much of it. The speed of the shutter and the size of the stop openings must, however, be in harmony with the power of the lens. The stop opening must be small enough to make it cut a sharp picture. If this opening is small the shutter must be relatively slow, in order to allow light enough to pass through the lens to affect the sensitive film.

Our double combination or "Rapid Rectilinear" lenses are fast, but the largest opening that will give sharp results is one-eighth of their focal length, designated as  $f$ -8. Such lenses will make snap shots in sunlight in a hundredth of a second and with the shutter working at a fiftieth will make very satisfactory negatives on hazy days.

When lenses of still greater speed are required we get into the Anastigmat class, the representative lenses of which are the Bausch & Lomb Zeiss-Tessar and Plastigmat lenses, and the Goerz Series III Anastigmats. These lenses consist of several pieces of glass most carefully ground and adjusted and the diameter of the largest opening is more than one-seventh of the focal length—designated with the Tessar lens,  $f$ -6.3, and with the other two,  $f$ -6.8. It is this large opening that gives the speed. Under good light conditions they may be used with high speed shutters for photographing the most rapidly-moving objects, but the great advantage of the Anastigmat lies in the fact that it permits the making of slow instantaneous exposures on days when they would be out of the question with a single lens and when results would be doubtful even with a Rapid Rectilinear.

Either of the makes of these lenses which we list will prove a great satisfaction to the Kodaker.

# ANASTIGMAT LENSES

## SPECIAL SHUTTER EQUIPMENTS

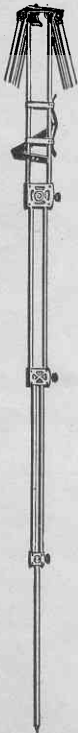
The No. 3, No. 3A Folding Pocket, No. 4 Screen Focus, No. 4A Folding, and the Cartridge Kodaks, may be equipped as follows :

| Style of Camera                 | Full Description | Size of Picture | B. & L. Plastigmat lens, f. 6.8, and Kodak Automatic Shutter | B. & L. Plastigmat lens, f. 6.8, and Volite Shutter | B. & L. Zeiss Tessar Series II B lens, f. 6.8, and Volite Shutter | Goetz Anastigmat lens, Series II B, f. 6.8, and Automatic Shutter | Goetz Anastigmat lens, Series II B, f. 6.8, and Volite Shutter |
|---------------------------------|------------------|-----------------|--|---|---|---|--|
| No. 3 Folding Pocket Kodak..... | 20               | 3¼ x 4¼         | No. 1 lens, \$37.00  | No. 1 lens, \$34.00                                 | No. 4 lens, \$33.50   | No. 0 lens, \$60.50   | No. 0 lens, \$67.50  |
| No. 3A Folding Pocket Kodak     | 22               | 3¼ x 5½         | No. 2 lens, 65.00  | No. 2 lens, 72.00                                   | No. 5K lens, 78.00  | No. 1A lens, 70.00  | No. 1A lens, 77.00   |
| No. 3 Cartridge Kodak.....      | 30               | 4¼ x 3¼         | No. 1 lens, 52.00  | No. 1 lens, 66.00                                   | No. 5 lens, 72.00   | No. 0 lens, 55.50   | No. 0 lens, 69.50  |
| No. 4 Cartridge Kodak.....      | 30               | 5 x 4           | No. 2 lens, 62.50  | No. 2 lens, 76.50                                   | No. 5 lens, 76.50   | No. 1A lens, 67.50  | No. 1A lens, 81.50   |
| No. 4 Cartridge Kodak .....     | 30               | 5 x 4           |  |   | No. 5K lens, 82.50  |   |  |
| No. 4 Screen Focus Kodak.....   | 26               | 4 x 5           | No. 2 lens, 67.50  | No. 2 lens, 81.50                                   | No. 5 lens, 81.50   | No. 1A lens, 72.50  | No. 1A lens, 86.50   |
| No. 4 Screen Focus Kodak.....   | 26               | 4 x 5           |  |   | No. 5K lens, 87.50  |   |  |
|                                 |                  |                 | B. & L. Automatic Shutter                                    |   |   | B. & L. Automatic Shutter   |  |
| No. 5 Cartridge Kodak .....     | 30               | 7 x 5           | No. 3 lens, \$34.50  | No. 3 lens, 33.50                                   | No. 6 lens, 105.00  | No. 3 lens, \$39.00   | No. 3 lens, 108.00   |
| No. 4A Folding Kodak.....       | 24               | 4¼ x 6½         |  |   | No. 6 lens, 100.00  | No. 3 lens, 94.00   | No. 3 lens, 103.00   |

# EASTMAN'S FOLDING HEAD TRIPOD

FOR 4x5 CAMERAS, OR SMALLER

**B**Y the simplest device, all the inconveniences of the old-fashioned tripod have been overcome. Other tripods are either awkwardly bulky when closed or else the head has to be removed from the legs. In the Eastman Folding Head Tripod the head itself folds, and the tripod then makes a compact, rectangular package. There are no loose parts. There is no complicated mechanism.



The accompanying illustration shows the working in detail. The brass plate upon which the camera rests is covered with leather, thus protecting the instrument.



SHOWING HEAD UNFOLDED  
READY TO RECEIVE CAMERA

All of the parts being accurately made, this tripod is exceedingly rigid, in spite of its small size and light weight. The wooden parts are of selected maple. The tripod is unusually handsome. Folds in four sections; has leather handle for carrying. Length, folded, 17 inches; length, extended, 52 1/2 inches; weight, 25 ounces.



SHOWING HEAD FOLDED AND TRIPOD  
CLOSED FOR CARRYING

## THE PRICE

|   |        |
|---|--------|
| Eastman Folding Head Tripod, . . . . .      | \$3.50 |
| Black Sole Leather Carrying Case, . . . . . | 1.50   |

## THE BULL'S-EYE TRIPOD

### TWO SECTIONS

An aluminum revolving head holds the socket screw and seats it in place in camera when turned, thus doing away with tripod screw. Made of spruce, with brass fittings. Leather handle for carrying. For 4 x 5 cameras, or smaller.

Price, . . . . . \$1.50

## EASTMAN'S FEATHER TRIPOD

### FOUR SECTIONS

An aluminum revolving head holds the socket screw and seats it in place in camera when turned, thus doing away with tripod screw. Legs fold in four sections. Length, closed, 14½ inches. Weight, in spruce, 17½ ounces; in cherry, 20½ ounces. Brass fittings, superb finish. For 4 x 5 cameras, or smaller.

|   |        |
|---|--------|
| Eastman's Feather Tripod Spruce, . . . . .  | \$3.00 |
| Ditto, Cherry, . . . . .                    | 3.25   |
| Ditto, Mahogany Finish, . . . . .           | 3.50   |
| Black Sole Leather Carrying Case, . . . . . | 1.50   |

## THE EASTMAN TRIPOD

### THREE SECTIONS

|   |        |
|---|--------|
| No. 1, Spruce, for cameras up to 6½ x 8½; weight, 1 pound, 10 ounces, . . . . . | \$2.25 |
| No. 1, Maple, for cameras up to 6½ x 8½; weight, 2 pounds, 2 ounces, . . . . .  | 2.25   |

NOTE—When kind of wood is not specified, we will furnish in maple.

## THE VICTOR TRIPOD

### TWO SECTIONS

|   |        |
|---|--------|
| No. 1, Spruce, for cameras up to 6½ x 8½; weight, 1 pound, 11 ounces, . . . . . | \$1.50 |
| No. 1, Maple, for cameras up to 6½ x 8½; weight, 2 pounds, 3 ounces, . . . . .  | 1.50   |

NOTE—When kind of wood is not specified, we will furnish in maple.

## THE FLEXO TRIPOD

### TWO SECTIONS

Has a fixed, non-detachable head. Only clear, straight-grained wood is used in its construction. The metal work is of brass and all parts are carefully and accurately made.

Price, . . . . . \$1.00

## VELOX PAPER



Velox prints in any light and requires no darkroom for development. Richness of the blacks and simplicity of manipulation are Velox characteristics.

It is suitable for portraits, landscapes, interiors, in fact, for photographic work of every sort. It is used in every branch of photography and avoids delay arising from dependence on sunlight for printing.

Velox permits the amateur to utilize his evening hours in print-making.

Velox is made in a number of different surfaces and two different grades. These enable the user to produce good prints from almost any negative, suiting his own individual taste and the peculiar requirements of his negatives.

Velox is divided broadly into two kinds of papers called "Regular" and "Special" (slow and fast), these terms having reference to the time required for exposure and development. In each division will be found a variety of surfaces which adapt the paper to all kinds of work and negatives of different qualities.

"Regular" papers develop quickly, and are best suited to negatives that lack contrast.

"Special" papers require longer development than the "Regular," and give soft effects from hard negatives. Any negative which will produce a good result with "printing-out" paper should be printed on "Special" Velox, while "Regular" Velox should be used only with very flat negatives.

Velox is furnished in a great variety of surfaces. In the "Regular" class the surfaces are Carbon (matt surface), Carbon Double Weight, Glossy, Velvet, and Velvet Double Weight. The surface of "Regular" Velvet Velox is semi-gloss and gives

# VELOX PAPER

## CONTINUED

prints of exceptional beauty. This paper will give satisfactory results from very flat negatives.

In the "Special" class the surfaces are Carbon (matt surface), Portrait (smooth matt), Portrait Double Weight, Rough, Rough Double Weight, Glossy, Velvet, and Velvet Double Weight. Special Velvet Velox has a greater range, however, than any of the other "Special" papers.

| Size   | SINGLE WEIGHT |         |        | DOUBLE WEIGHT |         |        |
|--|---------------|---------|--------|---------------|---------|--------|
|  | Doz.          | ¼ Gross | Gross  | Doz.          | ¼ Gross | Gross  |
| 2¼ x 3¼  | \$ .15        | \$ .60  | \$1.00 | \$ .20        | \$ .75  | \$1.25 |
| 2½ x 4¼  | .15           | .70     | 1.25   | .20           | .90     | 1.65   |
| 3½ x 3½  | .15           | .80     | 1.50   | .20           | 1.00    | 1.90   |
| 3¼ x 4¼  | .15           | .80     | 1.50   | .20           | 1.00    | 1.90   |
| 3¼ x 5½  | .15           | .80     | 1.50   | .20           | 1.00    | 1.90   |
| 4 x 5  | .25           | 1.10    | 2.00   | .30           | 1.40    | 2.50   |
| * 3¼ x 6 (Stereo)  | .25           | 1.10    | 2.00   |               |         |        |
| + * 3¾ x 6½  | .25           | 1.10    | 2.00   |               |         |        |
| 2¼ x 7   | .15           | .80     | 1.50   | .20           | 1.00    | 1.90   |
| 4¼ x 6½  | .30           | 1.65    | 2.80   | .40           | 2.05    | 3.50   |
| 5 x 7  | .35           | 2.00    | 3.50   | .45           | 2.50    | 4.40   |
| 3½ x 12  | .45           | 2.50    | 4.50   | .55           | 3.15    | 5.65   |
| Velox Post-Cards furnished in Regular Velvet,<br>Special Velvet, Special Rough and Special Portrait,<br>* Glossy only. |               |         |        | .20           | 1.10    | 2.00   |
| + For use in Self-Transposing Stereo Printing Frame.   |               |         |        |               |         |        |

## VELOX SUNDRIES

Various sundries are manufactured to be used in connection with Velox paper. A valuable acquisition to the list is the Nepera Solution, a universal developer, which is an ideal developer for Velox paper, and which, used in connection with the Nepera capsules, makes a perfect developer for film or plates.

The Velox Re-Developer is a new product with which Sepia tones can be obtained on Velox.

|   |        |
|---|--------|
| N. A. (Non-Abrasion) Velox Liquid Developer, 4-ounce bottle (makes 20 ounces for Special, 12 ounces for Regular), | \$ .25 |
| Ditto, 16-ounce bottle,   | .75    |
| Nepera Solution, per 4-ounce bottle (including 4 capsules for converting to film and plate developer),            | .25    |
| Ditto, 16 ounce bottle (without capsules),  | .60    |
| Nepera Capsules, per package 1 dozen,   | .15    |
| Velox Re-Developer, 4-ounce bottle (sufficient for 300 4 x 5 prints),   | .50    |
| Ditto, 2-ounces,  | .30    |
| Velox Liquid Hardener, per 4 ounce bottle,  | .15    |
| Ditto, 8-ounce bottle,  | .25    |
| Nepera M. Q. Tubes, box of 5 tubes,   | .75    |
| Kodak Acid Fixing Powder for fixing Velox prints, per pound,  | .25    |
| Ditto, ½ pound,   | .15    |
| Velox Amateur Printer, No. 2,   | 1.00   |
| Velox Amateur Printer No. 1 (furnished with gas pillar and adapter for electric socket),                          | 2.00   |
| Electric Attachment (extra). Comprising socket and plug connected by 6-foot cord,                                 | .75    |
| Welsbach Attachment (extra). Consisting of burner, mantle and large chimney,                                      | 1.25   |
| Extra mantles, each,  | .15    |
| Tubing, 6-foot lengths. For connecting printer with gas supply,   | .50    |

## EASTMAN'S SEPIA PAPER

As simple to handle and much quicker than Blue Print Paper. Especially desirable with negatives giving sketchy effects. Packed in sealed tubes.

| Size                                 | Price per 2 Doz. | Size                              | Price Per 2 Doz. |
|--------------------------------------|------------------|-----------------------------------|------------------|
| 2 $\frac{1}{4}$ x 2 $\frac{1}{4}$    | \$ .15           | 4 x 5                             | \$ .20           |
| 2 $\frac{1}{4}$ x 3 $\frac{1}{4}$    | .15              | 3 $\frac{1}{4}$ x 6 (Stereo)      | .20              |
| 2 $\frac{1}{2}$ x 4 $\frac{1}{4}$    | .15              | 2 $\frac{1}{4}$ x 7               | .20              |
| 3 $\frac{1}{8}$ x 3 $\frac{1}{8}$    | .15              |                                   | 1 Doz.           |
| 3 $\frac{1}{4}$ x 4 $\frac{1}{4}$    | .15              | 4 $\frac{1}{4}$ x 6 $\frac{1}{2}$ | .15              |
| 3 $\frac{1}{4}$ x 5 $\frac{1}{8}$    | .20              | 5 x 7                             | .20              |
| Septia post-cards, per pkg., 2 doz., | .25              | 3 $\frac{1}{2}$ x 12              | .20              |

## EASTMAN'S "FERRO-PRUSSATE" PAPER

Not a cheap commercial "Blue Print," but a paper that retains the delicacy and detail of the finest negatives. Packed in sealed tubes.

| Size   | Price per 2 Doz. | Size                              | Price per 2 Doz. |
|--|------------------|-----------------------------------|------------------|
| 2 $\frac{1}{4}$ x 2 $\frac{1}{4}$                | \$ .16           | 3 $\frac{1}{4}$ x 5 $\frac{1}{8}$ | \$ .20           |
| 2 $\frac{1}{4}$ x 3 $\frac{1}{4}$                | .16              | 3 $\frac{1}{4}$ x 6 (Stereo)      | .20              |
| 2 $\frac{1}{2}$ x 4 $\frac{1}{4}$                | .16              | 2 $\frac{1}{4}$ x 7               | .20              |
| 3 $\frac{1}{8}$ x 3 $\frac{1}{8}$                | .16              | 4 $\frac{1}{4}$ x 6 $\frac{1}{2}$ | .30              |
| 3 $\frac{1}{4}$ x 4 $\frac{1}{4}$                | .16              | 5 x 7                             | .35              |
| 4 x 5  | .20              | 3 $\frac{1}{2}$ x 12              | .40              |
| Eastman's "Ferro - Prussiate" 1 Doz. post-cards, | \$0.15           |                                   |                  |

## EASTMAN'S W. D. PLATINUM PAPER

A pure platinum paper, requiring only water development, without chemicals. Clears in water and acid. Produces effects equal in beauty to any photographic process. Packed in sealed tubes.

Two Grades—"Smooth" and "Rough."

| Size                              | Price per Doz. | Size                              | Price per Doz. |
|-----------------------------------|----------------|-----------------------------------|----------------|
| 2 $\frac{1}{4}$ x 3 $\frac{1}{4}$ | \$ .15         | 3 $\frac{1}{4}$ x 5 $\frac{1}{8}$ | \$ .30         |
| 2 $\frac{1}{4}$ x 4 $\frac{1}{4}$ | .20            | 3 $\frac{1}{4}$ x 6 (Stereo)      | .35            |
| 3 $\frac{1}{8}$ x 3 $\frac{1}{8}$ | .20            | 2 $\frac{1}{4}$ x 7               | .30            |
| 3 $\frac{1}{4}$ x 4 $\frac{1}{4}$ | .25            | 4 $\frac{1}{4}$ x 6 $\frac{1}{2}$ | .45            |
| 4 x 5                             | .35            | 5 x 7                             | .60            |
|                                   |                | 3 $\frac{1}{2}$ x 12              | .70            |

## MEZZO-TONE PAPER

A semi-matt self-toning paper, giving warm tones. Prints like Solio ; clears in common salt and water.

| Size                              | Price per Doz. | Size                              | Price per Doz. |
|-----------------------------------|----------------|-----------------------------------|----------------|
| 2 $\frac{1}{4}$ x 2 $\frac{1}{4}$ | \$ .15         | 3 $\frac{1}{4}$ x 5 $\frac{1}{8}$ | \$ .20         |
| 2 $\frac{1}{4}$ x 3 $\frac{1}{4}$ | .15            | 4 x 5                             | .20            |
| 2 $\frac{1}{2}$ x 4 $\frac{1}{4}$ | .15            | 2 $\frac{1}{4}$ x 7               | .20            |
| 3 $\frac{1}{8}$ x 3 $\frac{1}{8}$ | .15            | 4 $\frac{1}{4}$ x 6 $\frac{1}{2}$ | .30            |
| 3 $\frac{1}{4}$ x 4 $\frac{1}{4}$ | .15            | 5 x 7                             | .35            |
|                                   |                | 3 $\frac{1}{2}$ x 12              | .45            |



## EASTMAN'S PERMANENT BROMIDE PAPERS

The amateur can readily make enlargements from his own negatives by the use of Eastman's Bromide Paper and the Kodak Enlarging Camera, or can improvise an enlarging apparatus.

Velvet, Royal, Standard, Platino, Enameled, and Matte-Enamel.

| Size               | Per Doz. | Size    | Per Doz. |
|--------------------|----------|---------|----------|
| 2 1/4 x 3 1/4      | \$.15    | 8 x 10  | \$.80    |
| 3 1/4 x 4 1/4      | .15      | 10 x 12 | 1.20     |
| 3 1/4 x 5 1/2      | .15      | 11 x 14 | 1.60     |
| 4 x 5              | .25      | 14 x 17 | 2.40     |
| 3 1/4 x 6 (Stereo) | .25      | 16 x 20 | 3.20     |
| 4 1/4 x 6 1/2      | .30      | 18 x 22 | 4.00     |
| 5 x 7              | .35      | 20 x 24 | 4.80     |
| 5 x 8              | .40      |         |          |
| 6 1/2 x 8 1/2      | .60      |         |          |

Other sizes in proportion.

"Standard" is furnished in three weights: A, thin smooth; B, heavy smooth; C, heavy rough.

"Platino" is furnished in A, thin smooth, or C, heavy rough.

The "Royal" is furnished in "smooth" or "rough."

"Velvet" is furnished in one surface and one weight only.

## SOLIO PAPER

A rapid, glossy printing-out paper.

| Size                             | Per Pkg., 2 Doz. | 1/2 Gross | Gross  |
|----------------------------------|------------------|-----------|--------|
| 2 1/2 x 2 1/2                    | \$.20            | \$.60     | \$1.00 |
| 2 1/4 x 3 1/4                    | .20              | .60       | 1.00   |
| 2 1/2 x 4 1/4                    | .20              | .60       | 1.00   |
| 3 1/2 x 3 1/2                    | .20              | .60       | 1.15   |
| 3 1/4 x 4 1/4                    | .20              | .60       | 1.15   |
| 3 1/4 x 5 1/2                    | .25              | .70       | 1.25   |
| 4 x 5                            | .25              | .70       | 1.25   |
| 3 1/4 x 6 (Stereo)               | .25              | .70       | 1.25   |
| 2 1/4 x 7 (No. 1 Panoram-Kodak)  | .25              | .70       | 1.25   |
|                                  | Per Doz.         |           |        |
| 4 1/4 x 6 1/2                    | .25              |           |        |
| 5 x 7                            | .30              | 1.60      | 2.65   |
| 2 1/2 x 12 (No. 4 Panoram-Kodak) | .35              | 2.00      | 3.50   |

SECONDS: 4 x 5 (trimmed) seconds, \$1.00 per gross.

SOLIO Combined Toning and Fixing Solution, per 8-ounce bottle, 50 cents.

Ditto, 4-ounce bottle, 30 cents; post-paid, 50 cents.

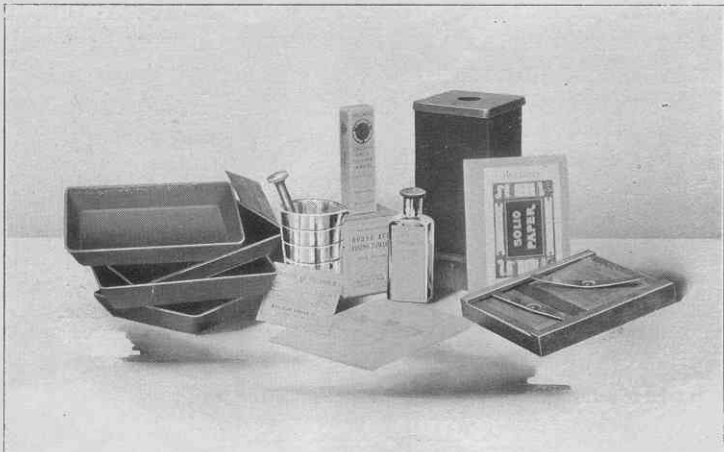
## EASTMAN'S EXO CLOTH

Gives delightfully warm Sepia tones, which, in combination with the satin-like effect of the cloth itself, yield soft, yet brilliant, prints of charming texture. All the operations are readily performed by any amateur. Packed in sealed tubes.

|                    |       |
|--------------------|-------|
| 4 x 5, per dozen   | \$.35 |
| 5 x 7, per dozen   | .60   |
| 8 x 10, per dozen  | 1.40  |
| 24 x 36, per sheet | 1.25  |

Other sizes will be cut to order in sizes smaller than 8 x 10 in dozen packages, and in sizes over 8 x 10 in one-half dozen packages, at proportionate prices.

## DEVELOPING AND PRINTING OUTFITS



**E**ASTMAN'S A B C Developing and Printing Outfit includes every requisite for developing by the darkroom method, printing and finishing twenty-four 4 x 5, 2½ x 4¼, or 3¼ x 4¼, or ninety-six 1⅝ x 2½ pictures.

### EASTMAN'S A B C DEVELOPING AND PRINTING OUTFIT.

|  |               |
|--|---------------|
| 1 Kodak Candle Lamp, . . . . .   | \$ .25        |
| 1 4 x 5 Printing Frame, . . . . .  | .25           |
| 1 4 x 5 Glass for Frame, . . . . .   | .05           |
| 1 4-ounce graduate, . . . . .  | .10           |
| 1 Stirring Rod, . . . . .  | .05           |
| 4 4½ x 5½ Developing Trays, . . . . .  | .40           |
| 5 Tubes Eastman's Special Developer, . . . . .   | .25           |
| ¼ pound Kodak Acid Fixing Powder, . . . . .  | .15           |
| ½ ounce Bromide Potassium, . . . . .   | .10           |
| 2 dozen 4 x 5 Solio Paper, . . . . .   | .25           |
| 2 ounces Solio Toning Solution, . . . . .  | .15           |
| Instruction Book, . . . . .  | .10           |
|  | <b>\$2.10</b> |
| Price, complete, neatly packed, . . . . .  | <b>\$1.50</b> |
| Eastman's Bull's-Eye Developing and Printing Outfit, complete, for developing and printing 12 pictures 3¼ x 3½. Similar to above outfit, but containing 1 dozen 3¼ x 3½ Solio paper and smaller quantities of chemicals. Price, complete, neatly packed, . . . . . | <b>\$1.25</b> |
| Brownie Developing and Printing Outfit, complete, for developing and printing 24 pictures 2¼ x 2¼. Price, complete, . . . . .  | <b>.90</b>    |

NOTE.—These outfits cannot be shipped by mail.

# EASTMAN'S KODAK DARKROOM LAMP

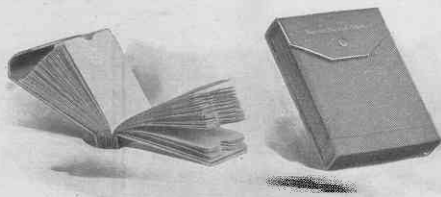
This lamp is well made and safe. It is equipped with improved burner carrying extra broad wick, and has new ventilating top, ensuring a bright, steady flame. Fitted with both ruby and orange glass. Flame controlled from the outside.



## THE PRICE

No. 1, Improved Kodak Darkroom Lamps, 1-inch wick, each, . . . . . \$1.50  
 No. 2, ditto,  $\frac{3}{8}$ -inch wick, each, . . . . . 1.00

# EASTMAN'S FILM NEGATIVE ALBUMS



Each album contains 100 pockets made of strong paper and consecutively numbered from 1 to 100, and an index on white paper.

## THE PRICE

Eastman's Negative Albums for 100 negatives,  $3\frac{1}{8} \times 3\frac{1}{8}$ , or smaller, . . . . . \$ .75  
 Eastman's Negative Albums for 100 negatives,  $3\frac{3}{4} \times 4\frac{1}{4}$ , or  $4 \times 5$ , . . . . . 1.00  
 Eastman's Negative Albums for 100 negatives,  $5 \times 7$ , or smaller, . . . . . 1.50

## EASTMAN'S KODOID PLATES

Consisting of N. C. Film sheets clipped at the edges to a black cardboard backing. Light, non-breakable, non-halation, orthochromatic. May be used in ordinary plate holders. No kits or other extras.

| Size          | Per Doz. | Size  | Per Doz. |
|---------------|----------|-------|----------|
| 3 1/4 x 3 1/2 | \$ .35   | 4 x 5 | \$ .65   |
| 3 1/2 x 3 3/4 | .35      | 5 x 7 | 1.10     |
| 3 3/4 x 4 1/4 | .45      |       |          |

## EASTMAN'S DRY PLATES

EXTRA RAPID FOR INSTANTANEOUS WORK

| Size          | Per Doz. | Size          | Per Doz. |
|---------------|----------|---------------|----------|
| 3 1/4 x 3 1/2 | \$ .35   | 4 x 5         | \$ .65   |
| 3 1/2 x 3 3/4 | .35      | 4 1/4 x 6 1/2 | .90      |
| 3 3/4 x 4 1/4 | .45      | 5 x 7         | 1.10     |

## EASTMAN'S DOUBLE COATED NON-HALATION PLATES

| Size          | Per Doz. | Size          | Per Doz. |
|---------------|----------|---------------|----------|
| 3 1/4 x 4 1/4 | \$ .55   | 4 1/4 x 6 1/2 | \$1.10   |
| 4 x 5         | .80      | 5 x 7         | 1.40     |

## LANTERN SLIDE PLATES

| Plates for making Lantern Slides, | Per Doz. | Cover Glass for Lantern Slides, | Per Doz. |
|-----------------------------------|----------|---------------------------------|----------|
|                                   | \$ .55   |                                 | \$ .25   |

## LOFSTEDT PRINTING FRAME



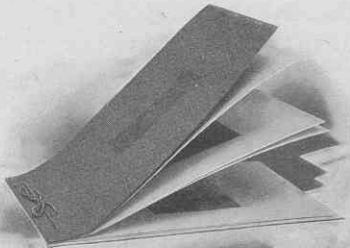
A new printing frame with an improved method of locking the springs so the paper cannot shift when opening or closing the frame.

Price, 4 x 5, . . . . . \$ .35

## PRINTING FRAMES

|   |        |
|---|--------|
| Eastman's 3 1/2 x 3 1/2, opens two-thirds,  | \$ .25 |
| Eastman's 3 1/4 x 4 1/4, opens two-thirds,  | .25    |
| Eastman's 4 x 5, opens two-thirds,  | .25    |
| Eastman's 5 x 7, opens two-thirds,  | .35    |
| Eastman's 3 1/2 x 12, for No. 4 Panoram-Kodak, opens in 3 sections,   | .75    |
| Eastman's 2 1/4 x 7, for No. 1 Panoram-Kodak, opens in 2 sections,  | .30    |
| Flexo Printing Frame, 4 x 5, opens two-thirds,  | .20    |
| Special Brownie Frame, for 2 1/4 x 2 1/4 Developing paper only,   | .10    |
| Stereo Self-Transposing Printing Frame, for making 3 1/4 x 2 1/2 stereo prints without cutting negatives apart, | 1.50   |

## ARTIST'S AND LAKESIDE ALBUMS



The Artist's Album is on the loose leaf system with covers of heavy embossed stock. Tied with silk lacing. Panel in cover for lettering. Leaves of heavy stock, antique finish. Ribbed tissue paper bound between each leaf.

THE ARTIST'S ALBUM

sue paper bound between each leaf.

| No. | Color | Leaf      | Size of Leaf | Capacity, | 20, | 4 x 5, | 3 1/2 x 3 1/2 | or | 3 1/4 x 4 1/4, | or | 40, | 2 1/4 x 3 1/4 |
|-----|-------|-----------|--------------|-----------|-----|--------|---------------|----|----------------|----|-----|---------------|
| 1   | Black | 5 1/2 x 7 | 7            | "         | 20, | 4 x 5, | 3 1/2 x 3 1/2 | or | 3 1/4 x 4 1/4, | or | 40, | 2 1/4 x 3 1/4 |
| 2   | White | 5 1/2 x 7 | 7            | "         | 20, | 4 x 5, | 3 1/2 x 3 1/2 | or | 3 1/4 x 4 1/4, | or | 40, | 2 1/4 x 3 1/4 |
| 3   | Sepia | 5 1/2 x 7 | 7            | "         | 20, | 4 x 5, | 3 1/2 x 3 1/2 | or | 3 1/4 x 4 1/4, | or | 40, | 2 1/4 x 3 1/4 |

Price 20 cents each, either color.

Extra Leaves, any color, complete with tissues, package of 5, 7 cents.

| No. | Color | Leaf | Size of Leaf | Capacity, | 20, | 5x7, | 3 1/4 x 5 1/2, | or | 40, | 4x5, | 3 1/4 x 4 1/4, | or | 3 1/2 x 3 1/2, | or | 80, | 2 1/4 x 3 1/4 |
|-----|-------|------|--------------|-----------|-----|------|----------------|----|-----|------|----------------|----|----------------|----|-----|---------------|
| 4   | Black | 7x10 | 10           | "         | 20, | 5x7, | 3 1/4 x 5 1/2, | or | 40, | 4x5, | 3 1/4 x 4 1/4, | or | 3 1/2 x 3 1/2, | or | 80, | 2 1/4 x 3 1/4 |
| 5   | White | 7x10 | 10           | "         | 20, | 5x7, | 3 1/4 x 5 1/2, | or | 40, | 4x5, | 3 1/4 x 4 1/4, | or | 3 1/2 x 3 1/2, | or | 80, | 2 1/4 x 3 1/4 |
| 6   | Sepia | 7x10 | 10           | "         | 20, | 5x7, | 3 1/4 x 5 1/2, | or | 40, | 4x5, | 3 1/4 x 4 1/4, | or | 3 1/2 x 3 1/2, | or | 80, | 2 1/4 x 3 1/4 |

Price 30 cents each, either color.

Extra leaves, any color, complete with tissues, package of 5, 10 cents.

The Lakeside Album is covered with finely-finished imitation leather heavily backed, with an artistically designed panel for lettering. The leaves of this album (twenty) are black and of superior stock.

| No. | Leaf      | Size of Leaf | Capacity, | 40, | 3 1/4 x 5 1/2, | or             | 80,            | 2 1/4 x 3 1/4, | Price  |                |                |      |                |        |       |      |
|-----|-----------|--------------|-----------|-----|----------------|----------------|----------------|----------------|--------|----------------|----------------|------|----------------|--------|-------|------|
| 8   | 5 x 7 1/2 | 7 1/2        | "         | 40, | 4 x 5,         | 3 1/4 x 4 1/4, | 3 1/2 x 3 1/2, | Price          | \$ .40 |                |                |      |                |        |       |      |
| 9   | 5 1/2 x 7 | 7            | "         | 40, | 4 x 5,         | 3 1/4 x 4 1/4, | 3 1/2 x 3 1/2, | Price          | .40    |                |                |      |                |        |       |      |
| 10  | 7 x 10    | 10           | "         | 40, | 5 x 7,         | or             | 80,            | 4 x 5,         | or     | 3 1/4 x 4 1/4, | or             | 160, | 2 1/4 x 3 1/4, | Price  | .50   |      |
| 11  | 10 x 12   | 12           | "         | 40, | 8 x 10,        | or             | 80,            | 5 x 7,         | or     | 160,           | 3 1/4 x 4 1/4, | or   | 160,           | 4 x 5, | Price | 1.00 |

Order by number.

## KODAK ALBUMS

On the loose leaf, lace system, and have plain gray leaves, of good, heavy stock, twenty leaves to the album. There is no printing on the leaves. The covers are of cloth in a delicate gray tint, with the title, "The Kodak Book," printed in gold leaf.

|          |                             |                       |            |       |         |
|----------|-----------------------------|-----------------------|------------|-------|---------|
| No. 101. | Size of leaf 5 x 6 1/2,     | 5 inches at back,     | 20 leaves, | Price | \$ 1.00 |
| No. 102. | Size of leaf 6 x 5,         | 6 inches at back,     | 20 leaves, | Price | 1.00    |
| No. 103. | Size of leaf 7 x 6,         | 7 inches at back,     | 20 leaves, | Price | 1.10    |
| No. 104. | Size of leaf 9 1/4 x 6 1/2, | 9 1/4 inches at back, | 20 leaves, | Price | 1.25    |
| No. 105. | Size of leaf 6 1/2 x 9,     | 6 1/2 inches at back, | 20 leaves, | Price | 1.25    |

## KODAK DRY MOUNTING TISSUE

An entirely new product, by which prints can be mounted even on thin mounts without curl, no apparatus being required—just the tissue and a flatiron. Put up in different sizes in packages with full directions for use.

| Sizes  |        |
|--|--------|
| 3 $\frac{1}{2}$ x 3 $\frac{1}{2}$ , 3 dozen, . . . . . | \$ .10 |
| 3 $\frac{3}{4}$ x 4 $\frac{1}{4}$ , 3 dozen, . . . . . | .10    |
| 3 $\frac{3}{4}$ x 5 $\frac{1}{2}$ , 2 dozen, . . . . . | .10    |
| 4 x 5, 2 dozen, . . . . .                              | .10    |

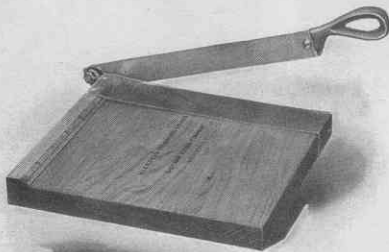
| Sizes  |        |
|--|--------|
| 5 x 7, 1 dozen, . . . . .                              | \$ .10 |
| 6 $\frac{1}{2}$ x 8 $\frac{1}{2}$ , 1 dozen, . . . . . | .15    |
| 8 x 10, 1 dozen, . . . . .                             | .20    |
| 5 yards, 20 inches wide (in roll), . . . . .           | .75    |

## BOOKS FOR THE AMATEUR

“The Modern Way in Picture Making.” The most practical and common sense book ever published for the amateur. Superb illustrations. Nearly 200 pages. Printed on heavy enameled paper. Cloth bound. Title in gold.

- “Modern Way in Picture Making,” cloth bound, beautifully illustrated, . . . . . \$1.00
- “Home Portraiture,” by Frank Morris Steadman, an illustrated book to guide the amateur in portrait work, leather cover, . . . . . .75
- Ditto, paper cover, . . . . . .25
- “Amateur Portraiture by Flashlight,” by William S. Ritch, a book full of valuable instruction, . . . . . .10

## KODAK TRIMMING BOARDS



Made of hard wood, with natural finish, have fine quality steel blades and are fitted with rule.

- No. 1, capacity, 5 x 5 inches, . . . . . \$ .40
- No. 2, capacity, 7 x 7 inches, . . . . . .60
- Transparent Trimming Gauge, for either size, extra, . . . . . .20

## FLASH SHEETS AND FLASH CARTRIDGES

**O**UR flash sheets are the softest, cleanest flash medium, giving a broad, soft light. As these sheets are not instantaneous, they give the effect of a short time exposure under a slightly subdued light—not the glare of the ordinary flash-powder. They do not startle the subject, nor give a staring effect to the eyes.

|  |        |
|--|--------|
| No. 1, per pkg. of half dozen sheets, 3 x 4 . . . . .  | \$ .25 |
| No. 2, per pkg. of half dozen sheets, 4 x 5 . . . . .  | .40    |
| No. 3, per pkg. of half dozen sheets, 5 x 7 . . . . .  | .60    |
| Eastman's Spreader Flash Cartridges, for use with pistol or fuse (price includes both fuse and cap), per pkg. of one-half dozen, . . . . . | .25    |
| Eastman's Spreader Flash Cartridge Pistol, . . . . .   | .50    |
| Eastman's No. 1 Flash Cartridges, per pkg. of ½ doz., . . . . .  | .60    |
| Ditto, No. 2, . . . . .  | .40    |
| Ditto, No. 3, . . . . .  | .25    |

## DEVELOPING TRAYS

|  |                               |        |
|--|-------------------------------|--------|
| "Bull's-Eye" Composition, 3½x3½, \$ .10    | Paper, 4 x 5, . . . . .       | \$ .10 |
| "Bull's-Eye" Composition, 4 x 5, . . . . . | Paper, 5 x 7, . . . . .       | .15    |
| "Bull's-Eye" Composition, 5 x 7, . . . . . | Hard Rubber, 4 x 5, . . . . . | .27    |
| "Bull's-Eye" Composition, 3x8½, . . . . .  | Hard Rubber, 5 x 7, . . . . . | .56    |
| "Bull's-Eye" Composition, 4½x14, . . . . . |                               |        |

## CHEMICALS

*For Tank Developer Chemicals, see page 43*

*For Developing Machine Chemicals, see page 44*

|   |        |
|---|--------|
| Eastman's Special Developer Powder, per pkg., 5 powders in sealed glass tubes, . . . . .                        | \$ .25 |
| Eastman's Hydrochinon Developer Powders, per dozen, . . . . .   | .50    |
| Ditto, per half dozen, . . . . .  | .25    |
| Ditto, per pkg. 5 powders in sealed glass tubes, . . . . .  | .25    |
| Eastman's Pyro Developer Powders, per dozen, . . . . .  | .50    |
| Ditto, per half dozen, . . . . .  | .25    |
| Ditto, per pkg. 5 powders in sealed glass tubes, . . . . .  | .25    |
| Eastman's Dekko Developer Powders, per dozen, . . . . .   | .50    |
| Ditto, per half dozen, . . . . .  | .25    |
| Ditto, per pkg. 5 powders in sealed glass tubes, . . . . .  | .75    |
| Royal Re-Developer, per pkg. of 6 tubes, . . . . .  | .10    |
| Hypo Sulphite of Soda, pulverized, per pound, . . . . .   | .25    |
| Kodak Acid Fixing Powder, per lb. pkg., . . . . .   | .15    |
| Ditto, per one-half lb. pkg., . . . . .   | .15    |
| Bromide Potassium, per ounce, . . . . .   | .30    |
| Citric Acid, 4-ounce bottle, . . . . .  | .50    |
| Solio Toning Solution, per 8-ounce bottle, . . . . .  | .50    |
| Solio Toning Solution in 4-ounce bottles, as follows: 4 ounces Toning Solution (2c. extra, postpaid), . . . . . | .30    |
| Solio Hardener, per 8-ounce bottle, . . . . .   | .35    |

## SUNDRIES

|   |   |        |
|---|---|--------|
| Eastman's Photo Paste, 3 oz. tube, \$ .15                     | Graduate, 4 oz., . . . . .  | \$ .10 |
| Eastman's Photo Paste, 5 oz. tube, . . . . .                  | Ditto, 8 oz., . . . . .   | .15    |
| Kodak Push Pins, per box ½ doz., . . . . .                    | Ditto, 16 oz., . . . . .  | .20    |
| Kodak Candle Lamp, . . . . .                                  | Ditto, 24 oz., . . . . .  | .25    |
| Solio Thermometer, . . . . .                                  | Ferrotypes Plate, 10 x 14, light, . . . . .                               | .15    |
| Eastman's Film Clips, 3½-inch, per pair (nickeled), . . . . . | Ditto, 10 x 14, heavy, . . . . .  | .20    |
| Ditto, 5-inch, . . . . .                                      | Ditto, 18 x 24, heavy, . . . . .  | .75    |
| Ditto, 7-inch, . . . . .                                      | Kodak Print Roller, 2 x 6-inch rubber rollers, nickeled frame, . . . . .  | .50    |
| Kodak Film Clips, 5-inch (wooden), . . . . .                  | Flexo Print Roller, 4-inch rubber roller, black enameled frame, . . . . . | .15    |

# KODAK MOUNTS

## DUPLEX

**CARBON BLACK ON ONE SIDE, SCOTCH GRAY ON THE OTHER. EACH SIDE SUITABLE FOR MOUNTING ON**

| For Prints | Size Outside | Per 100 | Per 50 | For Prints | Size Outside | Per 100 | Per 50 |
|------------|--------------|---------|--------|------------|--------------|---------|--------|
| 1½ x 2     | 2½ x 3½      | \$ .20  | \$.10  | 3½ x 3½    | 5 x 5        | \$.50   | \$.25  |
| 2¼ x 2¼    | 3½ x 3½      | .20     | .10    | 3¼ x 4¼    | 4¾ x 5¾      | .65     | .35    |
| 1½ x 2½    | 3¼ x 4       | .30     | .15    | 3¼ x 5½    | 4¾ x 7       | .65     | .35    |
| 2¼ x 3¼    | 4 x 5        | .40     | .20    | 4 x 5      | 5½ x 6½      | .65     | .35    |
| 2½ x 4¼    | 4¼ x 6       | .50     | .25    | 4¼ x 6½    | 5¾ x 8       | .95     | .50    |
|            |              |         |        | 5 x 7      | 7 x 9        | 1.00    | .50    |

No orders accepted for less than fifty of one kind and size.

## BEVPLANE

**CARBON BLACK AND SCOTCH GRAY**

| For Prints | Size Outside | Per 100 | Per 50 | For Prints | Size Outside | Per 100 | Per 50 |
|------------|--------------|---------|--------|------------|--------------|---------|--------|
| 1½ x 2     | 2½ x 3½      | \$ .30  | \$.15  | 3¼ x 5½    | 4¾ x 7       | \$.90   | \$.45  |
| 1½ x 2½    | 3¼ x 4       | .55     | .30    | 4 x 5      | 5½ x 6½      | .90     | .45    |
| 2¼ x 3¼    | 4 x 5        | .55     | .30    | 2¼ x 7     | 4 x 8¾       | .90     | .45    |
| 2½ x 4¼    | 4¼ x 6       | .80     | .40    | 4¼ x 6½    | 5¾ x 8       | 1.50    | .75    |
| 3½ x 3½    | 5 x 5        | .80     | .40    | 5 x 7      | 7 x 9        | 1.75    | .90    |
| 3¼ x 4¼    | 4¾ x 5¾      | .80     | .40    | 3½ x 12    | 5¾ x 13¾     | 1.75    | .90    |

No orders accepted for less than fifty of one kind and size.

## RIVIERA

**ASH GRAY AND WHITE**

| For Prints | Size Outside | Per 100 | Per 50 | For Prints | Size Outside | Per 100 | Per 50 |
|------------|--------------|---------|--------|------------|--------------|---------|--------|
| 1½ x 2     | 3 x 3½       | \$ .30  | \$.15  | 3¼ x 4¼    | 4¼ x 5½      | \$.65   | \$.35  |
| 1½ x 2½    | 3 x 3½       | .40     | .20    | 4 x 5      | 5½ x 6½      | .85     | .45    |
| 2¼ x 3¼    | 3½ x 3½      | .40     | .20    | 3¼ x 5½    | 5½ x 6½      | .95     | .50    |
| 2¼ x 3¼    | 3½ x 4½      | .50     | .25    | 4¼ x 6½    | 5¾ x 8       | 1.40    | .70    |
| 2½ x 4¼    | 4½ x 5¾      | .65     | .35    | 5 x 7      | 7 x 9        | 1.50    | .75    |
| 3½ x 3½    | 5 x 5        | .65     | .35    |            |              |         |        |

No orders accepted for less than fifty of one kind and size.

## NAPLES

**QUEEN'S GRAY, ARTISTS' BROWN, AND JET BLACK**

| For Prints | Size Outside | Per 100 | Per 50 | For Prints | Size Outside | Per 100 | Per 50 |
|------------|--------------|---------|--------|------------|--------------|---------|--------|
| 2¼ x 3¼    | 4 x 5        | \$.75   | \$.40  | 4 x 5      | 5½ x 6½      | \$1.00  | \$.50  |
| 2½ x 4¼    | 4¼ x 6       | .85     | .45    | 3¼ x 5½    | 5¼ x 7½      | 1.10    | .55    |
| 3½ x 3½    | 5 x 5        | .85     | .45    | 4¼ x 6½    | 6 x 8¼       | 1.50    | .75    |
| 3¼ x 4¼    | 5 x 6        | .90     | .45    | 5 x 7      | 7 x 9        | 1.75    | .90    |

No orders accepted for less than fifty of one kind and size.

## WASHINGTON

**QUEEN'S GRAY**

| For Prints | Size Outside | Per 100 | Per 50 | For Prints | Size Outside | Per 100 | Per 50 |
|------------|--------------|---------|--------|------------|--------------|---------|--------|
| 2¼ x 3¼    | 4 x 5        | \$1.10  | \$.55  | 3¼ x 5½    | 5¼ x 7½      | \$1.40  | \$.70  |
| 2½ x 4¼    | 4¼ x 6       | 1.15    | .60    | 4 x 5      | 5½ x 6½      | 1.35    | .70    |
| 3½ x 3½    | 5 x 5        | 1.15    | .60    | 5 x 7      | 7 x 9        | 2.75    | 1.40   |
| 3¼ x 4¼    | 5 x 6        | 1.25    | .65    |            |              |         |        |

No orders accepted for less than fifty of one kind and size.

## STEREO MOUNTS

**QUEEN'S GRAY**

| Size of Mount | Per 100 | Per 50 |
|---------------|---------|--------|
| 3½ x 7        | \$ .45  | \$.25  |

No orders accepted for less than fifty of one kind and size.



## DEVELOPING AND PRINTING

| Finishing Kodak Cartridge Films on Velox Paper      | Pocket Kodak,<br>1½ x 2 | No. 0 Folding P. K.,<br>1¼ x 2½ | No. 1 Folding P. K.,<br>2¼ x 3¼ | No. 1A Folding P. K.,<br>2½ x 4¼ | No. 2 Bull's-eye,<br>Etc., 3½ x 3½ | No. 3 F. P. K., No. 3<br>F. Brownie, etc.,<br>3¼ x 4¼ | No. 3A and 3B,<br>3¼ x 5½ | No. 4 B. E., etc.,<br>4 x 5 | No. 4A, 4¼ x 6¼<br>5 Kodaks, etc., 5 x 7 |
|---|-------------------------|---------------------------------|---------------------------------|----------------------------------|------------------------------------|---|---------------------------|-----------------------------|--|
| Developing, Printing, and Mounting 1-Film Cartridge | \$.90                   | \$.95                           | \$1.40                          | \$1.50                           | \$1.50                             | \$1.50  | \$1.50                    | \$1.80                      | \$1.20                                   |
| Developing and Printing, Unmounted                  | .84                     | .89                             | 1.28                            | 1.38                             | 1.38                               | 1.38  | 1.40                      | 1.68                        | 1.05                                     |
| Developing only                                     | .02                     | .03                             | .04                             | .06                              | .06                                | .06   | .08                       | .08                         | .10                                      |
| Printing and Mounting only, each                    | .06                     | .06                             | .08                             | .08                              | .08                                | .08   | .10                       | .10                         | .12½                                     |
| Printing, Unmounted only, each                      | .05½                    | .05½                            | .07                             | .07                              | .07                                | .07   | .09                       | .09                         | .10                                      |
| Developing, Printing, and Mounting, each            | .08                     | .08½                            | .12                             | .12½                             | .12½                               | .12½  | .15                       | .15                         | .20                                      |
| Developing and Printing, Unmounted, each            | .07½                    | .08                             | .11                             | .11½                             | .11½                               | .11½  | .14                       | .14                         | .17½                                     |

Above prices cover Cartridges of 12 exposures for Pocket Kodak No. 0 Folding, No. 1 Folding, No. 1A Folding, 3¼ x 3¼, No. 3 Folding, and No. 3 Folding Brownie; 10 exposures for Nos. 3A and 3B, and 6 exposures for No. 4A Folding, and 5x7. On orders for less, 25 cents extra will be charged.

| Brownie Camera, Stereo and Panoram-Kodak sizes, on Velox. | No. 1 Brownie,<br>2¼ x 2¼ | No. 2 and No. 2<br>Folding Brownie,<br>2¼ x 3¼ | No. 1 Panoram,<br>2¼ x 7 | No. 4 Panoram,<br>3½ x 12 | No. 2 Stereo Kodak,<br>3¼ x 6 | No. 2 Stereo<br>Brownie, 3¼ x 5 |
|---|---------------------------|--|--------------------------|---------------------------|-------------------------------|---------------------------------|
| Developing, Printing, and Mounting 1-Film Cartridge       | \$.50                     | \$.70  | \$1.40                   | \$1.75                    | \$1.50                        | \$1.50                          |
| Developing and Printing Unmounted 1-Film Cartridge        | .47                       | .64  | 1.28                     | 1.60                      | 1.38                          | 1.40                            |
| Developing only   | .03                       | .04  | .08                      | .18                       | .12                           | .08                             |
| Printing and Mounting only, each                          | .06                       | .08  | .16                      | .20                       | .16                           | .10                             |
| Printing, Unmounted only, each                            | .05½                      | .07  | .14                      | .17                       | .14                           | .09                             |

Above price list is for one full roll as follows: 6 exposures No. 1 and No. 2 Brownie; 10 exposures No. 2 Stereo Brownie; 6 exposures No. 2 Stereo Kodak; 6 exposures No. 1 Panoram, or 5 exposures No. 4 Panoram. On orders for less than a full roll, as above, 25 cents extra will be charged.

Prints are furnished unmounted in all cases, unless otherwise specified in order. Unmounted prints on "Double Weight" Velox will be billed at mounted rates. All prints are mounted with Kodak Dry Mounting Tissue, and therefore do not curl.

## ENLARGEMENTS

|                             | Each  | Per Doz. |                  | Each   | Per Doz. |
|-----------------------------|-------|----------|------------------|--------|----------|
| 4¼ x 6¼, on card            | \$.35 | \$3.00   | 10 x 12, on card | \$1.00 |          |
| 6¼ x 8¼, on card            | .50   | 5.00     | 11 x 14, on card | 1.25   |          |
| 8 x 10, on card             | .75   |          | 14 x 17, on card | 1.50   |          |
| Larger sizes in proportion. |       |          |                  |        |          |
| Lantern Slides              |       |          |                  | .50    | \$5.00   |

No extra charge for Sepia Tones on Royal or Enamel Bromide enlargements. Where the kind of paper is not specified we will make the enlargements upon the paper which, in our judgment, is best suited to the negative and the subject. Small extra charge for double or triple mounting.

## SPECIMEN PRINTS

**A** SPECIMEN photograph made with any kodak (not larger than 4 x 5) will be sent to any address in the United States upon receipt of four cents in stamps; No. 4A Folding Kodak, No. 5 Cartridge Kodak, eight cents; Stereo, eight cents; No. 4 Panoram-Kodak, twenty cents.

## TOURISTS

Travelers can always obtain fresh supplies of film at short notice at any one of the following addresses:

LONDON — Kodak, Limited, 57-61 Clerkenwell Road, E. C.; 60 Cheapside, E. C.; 115 Oxford Street, W.; 171-173 Regent Street, W.; 59 Brompton Road, S. W.; 40 Strand, W. C.

LIVERPOOL — Kodak, Limited, 96 Bold Street.

GLASGOW — Kodak, Limited, 72-74 Buchanan Street.

PARIS — Eastman Kodak Societe Anonyme Francaise, Avenue de l'Opera, 5; Place Vendome, 4.

LYONS — Eastman Kodak Societe Anonyme Francaise, 26-28 Rue de la Republique; 11 Rue du Palais-Grillet.

BERLIN — Kodak Gesellschaft, m. b. H., Friedrichstrasse, 16; Kodak Galerie, Leipzigerstrasse, 114; Unter den Linden, 26.

BRUSSELS — Kodak, Limited, 36 Rue du Fosse aux Loups; 59 Montagne de la Cour.

VIENNA — Kodak, Limited, Graben 29.

ST. PETERSBURG — Kodak, Limited, Bolschaja Konjuschennaja 1.

MOSCOW — Kodak, Limited, 15, 16 Petrovka.

MILAN — Societa Kodak, 10 Via Vittore Pisani; 34 Corso Vittorio Emanuele.

TORONTO — Canadian Kodak Company, 588-592 King Street, West.

## TERMS

**T**HE prices in this catalogue are strictly net, except to regular dealers who carry our goods in stock. For the convenience of our customers we recommend that they make their purchases from a dealer in photographic goods, as by so doing they can save both time and express charges.

EASTMAN KODAK CO.,  
Rochester, N. Y.